

YEAR

2015

LINK

FAN KAM RD (from KAM TIN RD to CASTLE PEAK RD)

COVERAGE (B) STATION

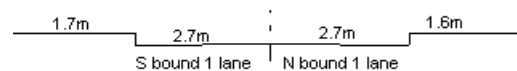
6212

ROAD NETWORK

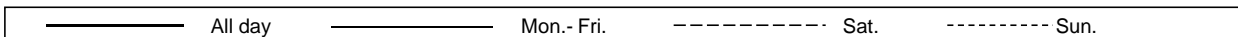
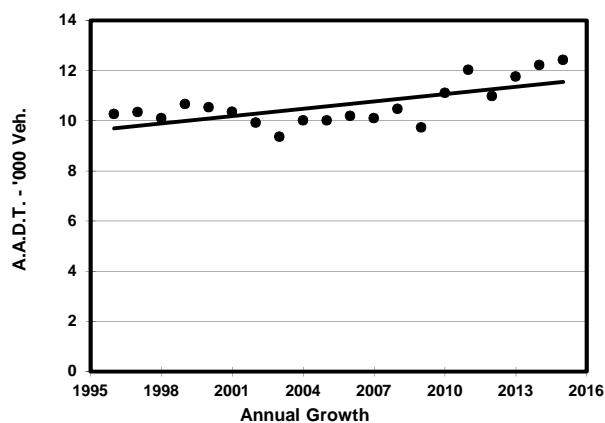
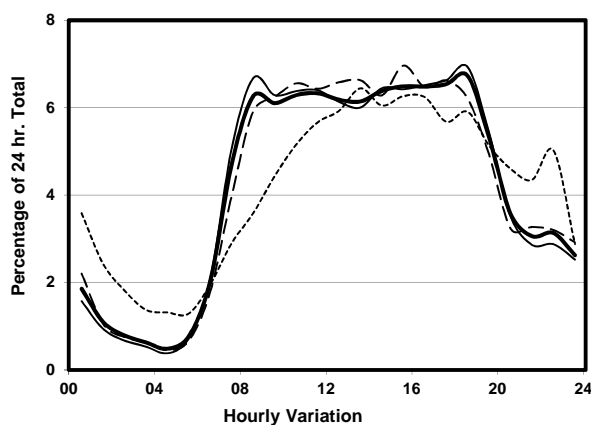
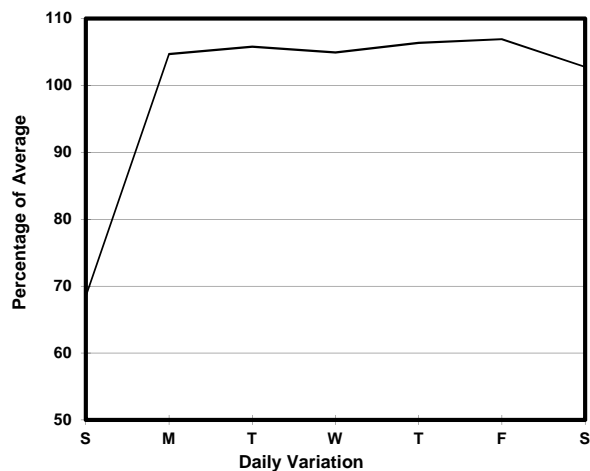
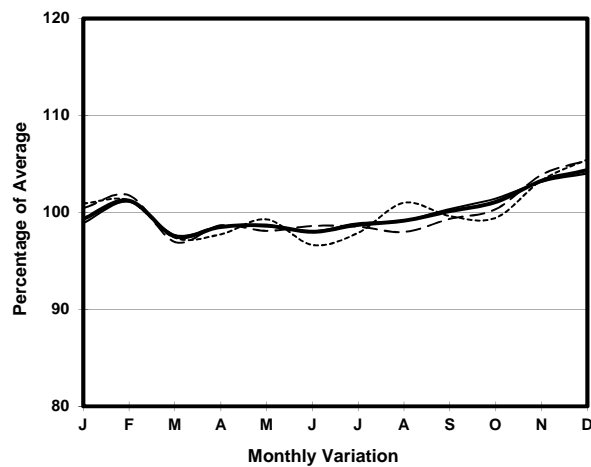
MAJOR

ROAD TYPE

RURAL ROAD



1. TRAFFIC FLOW VARIATION AND GROWTH



2. TRAFFIC CHARACTERISTICS (BY DIRECTION)

Parameter	All - Day	Mon. - Fri.	Sat.	Sun.
SOUTH BOUND				
A.A.D.T.	6490	7070	6440	4420
R 12 / 24 - %	74.7	75.7	73.6	67.7
R 16 / 24 - %	89.8	90.3	89.2	86.1
AM Peak Hour	0800-0900	0800-0900	0800-0900	0900-1000
One-way flow at AM peak hour	410	460	460	190
T - % (AM)	-	6.1	-	-
PM Peak Hour	1800-1900	1800-1900	1600-1700	1600-1700
One-way flow at PM peak hour	420	460	400	300
T - % (PM)	-	2.1	-	-
Prop.of commercial vehicles - 16 hr.	-	9.5	-	-
NORTH BOUND				
A.A.D.T.	5930	6290	6530	4240
R 12 / 24 - %	74.6	76.2	76.2	60.6
R 16 / 24 - %	89.6	90.8	89.8	80.4
AM Peak Hour	0900-1000	0800-0900	0900-1000	0900-1000
One-way flow at AM peak hour	380	440	420	190
T - % (AM)	-	6.7	-	-
PM Peak Hour	1800-1900	1800-1900	1700-1800	1600-1700
One-way flow at PM peak hour	410	460	460	240
T - % (PM)	-	5.1	-	-
Prop.of commercial vehicles - 16 hr.	-	10.8	-	-

3. OTHER INFORMATION AND COMMENT

Coverage (B) Station 6212
Year 2015

4. Vehicle classification and occupancy - Monday to Friday

Time		Class of vehicle									
		Motor	Private	Taxi	Private	PLB	Goods veh.		Non	Fr. Bus	
		Cycle	Car		LB		Light	M & H	Fr. Bus	SD	DD
0700-0800	Pro	9.6	38.3	15.3	1.9	5.7	14.4	12.4	1.0	0.5	1.0
	Ocp	1.1	1.6	1.8	7.5	13.3	1.7	1.1	18.0	31.0	43.0
0800-0900	Pro	1.2	39.9	23.7	2.5	5.0	21.2	5.6	0.0	0.3	0.5
	Ocp	1.0	1.3	1.4	10.8	14.0	1.4	1.2	0.0	29.5	31.7
0900-1000	Pro	0.8	39.7	16.5	0.8	4.5	23.2	13.5	0.0	0.6	0.6
	Ocp	2.0	1.3	1.4	1.0	9.3	1.4	1.2	0.0	27.0	26.0
1000-1100	Pro	0.6	37.5	13.3	0.6	2.5	31.7	12.7	0.0	0.3	0.6
	Ocp	1.0	1.3	1.2	1.0	10.5	1.4	1.4	0.0	11.5	20.8
1100-1200	Pro	1.3	44.1	8.9	0.6	3.2	32.6	8.3	0.0	0.5	0.5
	Ocp	1.5	1.2	1.5	1.0	8.8	1.3	1.2	0.0	20.0	15.0
1200-1300	Pro	3.8	37.9	13.3	1.9	4.7	24.6	12.3	0.0	0.7	0.7
	Ocp	1.0	1.3	1.3	1.0	6.4	1.7	1.0	0.0	16.7	25.7
1300-1400	Pro	0.7	35.9	12.2	1.4	1.4	35.9	10.8	0.7	0.3	0.7
	Ocp	2.0	1.3	1.4	14.5	14.0	1.6	1.2	2.0	16.0	22.3
1400-1500	Pro	0.7	43.5	12.0	0.0	2.7	31.4	8.7	0.0	0.5	0.5
	Ocp	1.0	1.4	1.6	0.0	11.3	1.4	1.4	0.0	18.7	20.0
1500-1600	Pro	1.2	47.1	10.3	0.0	1.2	25.4	13.9	0.0	0.3	0.6
	Ocp	1.0	1.4	1.4	0.0	13.5	1.4	1.2	0.0	20.5	22.3
1600-1700	Pro	0.6	53.2	4.9	1.9	1.9	22.3	14.2	0.0	0.5	0.6
	Ocp	1.0	1.5	1.1	1.0	7.0	1.3	1.1	0.0	21.0	21.3
1700-1800	Pro	1.5	56.9	9.2	1.5	3.1	22.3	3.8	0.8	0.4	0.4
	Ocp	1.0	1.3	1.9	1.0	15.8	1.2	1.0	1.0	23.5	49.0
1800-1900 Peak hour	Pro	3.1	58.3	14.4	0.0	1.9	18.8	1.9	0.6	0.5	0.5
	Ocp	1.0	1.4	1.6	0.0	16.0	1.3	1.0	5.0	43.3	54.7
1900-2000	Pro	2.8	58.9	13.8	0.9	5.5	12.0	4.6	0.0	0.2	1.4
	Ocp	1.0	1.3	1.8	2.0	13.2	1.4	1.2	0.0	44.0	32.8
2000-2100	Pro	1.2	63.4	8.7	0.0	6.2	14.9	2.5	1.2	0.9	0.9
	Ocp	1.0	1.4	1.0	0.0	8.2	1.7	1.5	2.0	11.0	17.0
2100-2200	Pro	0.0	53.0	22.7	0.0	6.3	11.4	5.0	0.0	0.6	0.9
	Ocp	0.0	1.5	1.8	0.0	7.0	1.2	1.0	0.0	16.0	13.0
2200-2300	Pro	4.0	63.1	20.1	0.0	2.7	6.7	1.3	0.0	1.0	1.0
	Ocp	1.0	1.6	1.5	0.0	7.5	1.2	1.0	0.0	14.7	11.3
16 hours	Pro	1.9	47.1	13.3	0.9	3.4	23.3	8.7	0.2	0.5	0.7
	Ocp	1.1	1.4	1.5	5.2	11.0	1.4	1.2	5.6	22.0	26.5

Legend

Pro. Proportion of vehicles in % (Sum may not add up to 100% due to figure rounding)*

Ocp. Average occupancy of vehicles including both driver and passengers*

M&H Medium and Heavy

* All traffic data are collected from combined bounds except for one way traffic